



FLOOD MANAGEMENT PLAN UPDATES

Flood Mitigation Program

4.1 COMMUNITY ASSESSMENT

- 4.1.1 Assemble Stakeholder groups for LRW, CCW and downstream communities
 - 4.1.2 Conduct public outreach
 - 4.1.3 Document the community assessment
-

4.2 WATERSHED ASSESSMENT

- 4.2.1 Historical
 - 4.2.2 Demographic
 - 4.2.3 Topographic
 - 4.2.4 Watershed Assessment Summary
-

4.3 FLOOD MITIGATION PROGRAM

- 4.3.1 Determine Local Flood Risk Needs
 - 4.3.2 Formal **Flood Mitigation Plan**
 - 4.3.3 Low-Cost Stream Sensors and Road Signage Placement
 - 4.3.4 Flood and High-Water Safety Education
 - 4.3.5 Flood Mitigation Final Report
-



UNDERSTAND THE WATERSHED



TAKE ACTION & IMPLEMENT SOLUTIONS



STRONGER, SAFER COMMUNITIES

Flood Mitigation Plan



Ties all assessments together

Creates a clear picture of flood risk.



Improves Emergency Response

Helps emergency responders act faster and more effectively.



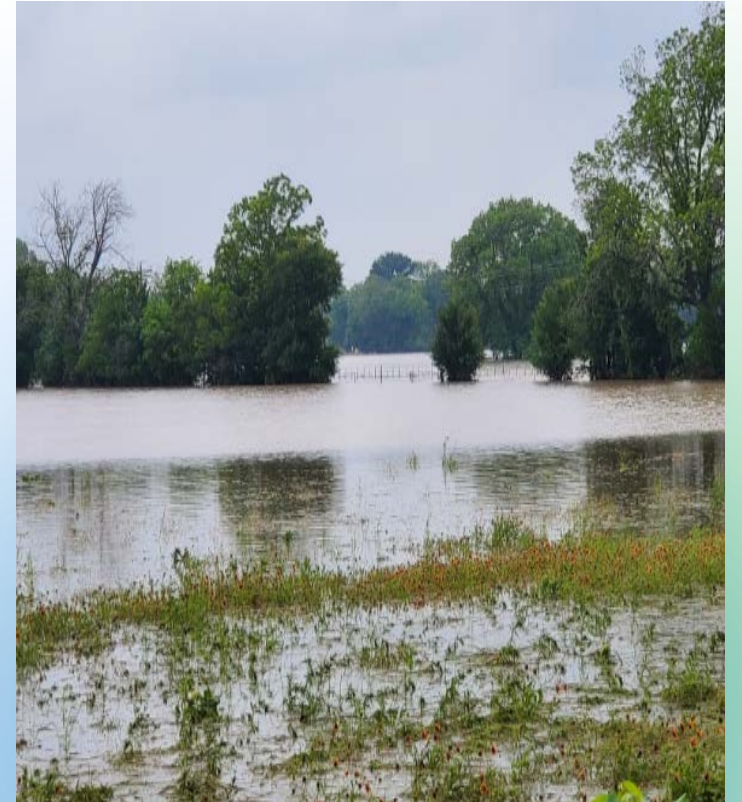
Provides a way to communicate real-time threats

Keeps communities informed when most important



Inform vulnerable locations

Focus resources where they are needed most



GETTING THE RIGHT INFORMATION TO THE RIGHT PEOPLE AT THE RIGHT TIME

Accurate data. Timely communication. Smarter decisions. Safer communities.

Low-Cost Stream Sensors

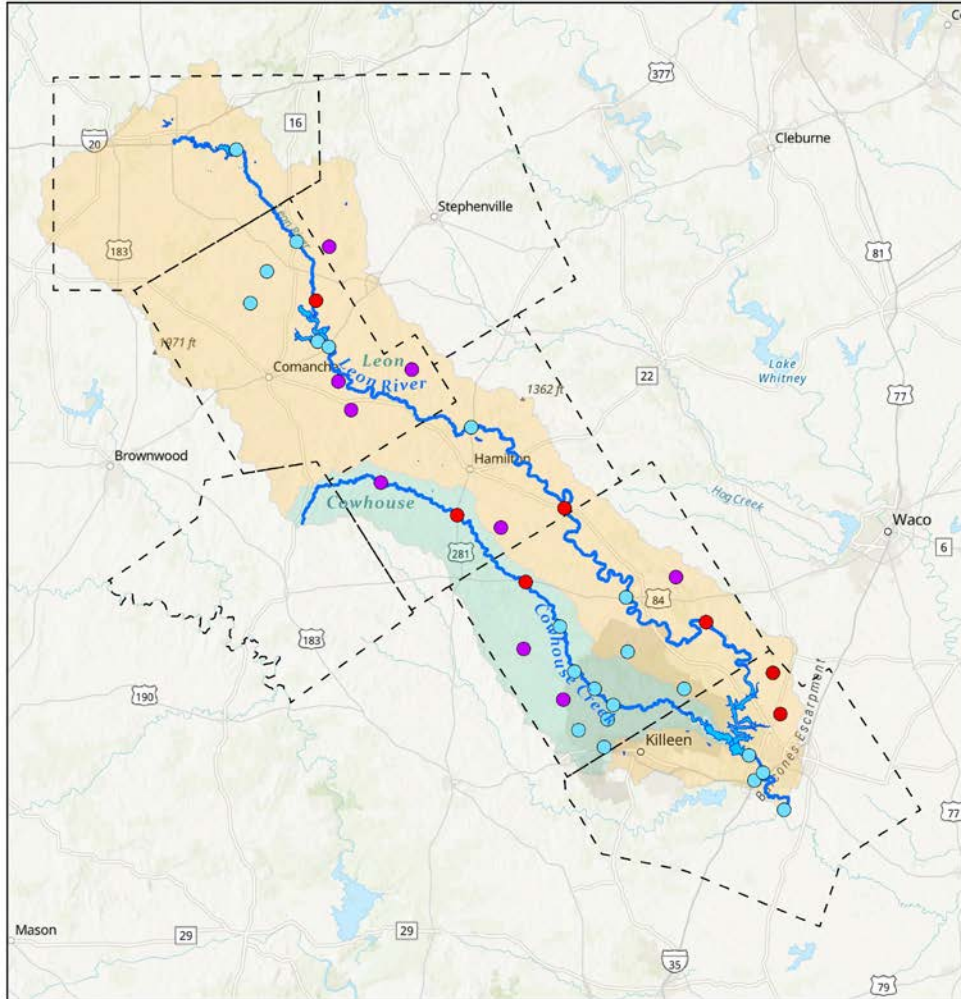
Leon River & Cowhouse Creek Stream Gauges



Legend

- Sub-Basin - Leon
- Sub-Basin - Cowhouse
- ACF Gauges (9)
- Planned Stream Gauges (7)
- USGS / NOAA Gauges

Overview Map



Stream Guage Field Pictures



Plum Creek & CR
410 - Hamilton

N. Bee House Creek
& Slater Road -
Coryell



S. Leon River & CR
250 - Comanche

Data Delivery - Current

NRS Leon River & Cowhouse Creek Stream Gauge Dashboard

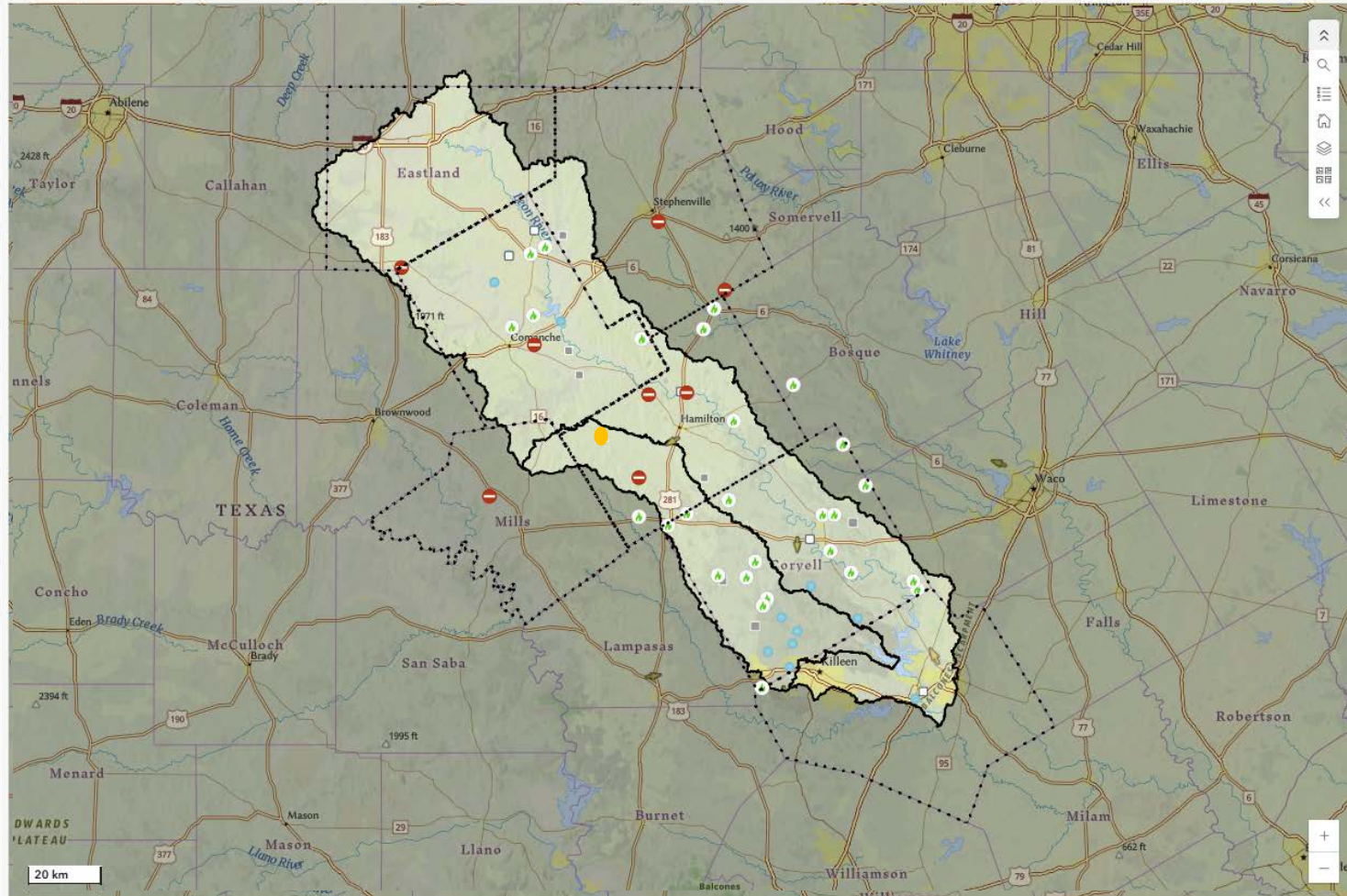
ACF Gauges

- SLnRvr, CR250 - 0.38 Ft.
As of: 3/3/26, 2:30 PM
- PlmCrk, CR410 - 1.80 Ft.
As of: 3/3/26, 2:15 PM
- NBHCrk, SitrRd - 2.37 Ft.
As of: 3/3/26, 2:30 PM
- ArmstrongCrk, FM2156 - 0.25 Ft.
As of: 3/3/26, 2:15 PM
- Cwhse, FM218 - 1.98 Ft.
As of: 3/3/26, 2:25 PM
- IndnCrk, CR304 - 0.00 Ft.
As of: 3/3/26, 1:35 PM
- RsllyCrk - 0.09 Ft.
As of: 2/28/26, 6:33 AM
- TblRckCrk - 0.37 Ft.
As of: 3/3/26, 1:22 PM
- ClrCrk - 1.45 Ft.
As of: 3/3/26, 2:25 PM

Watches & Warnings



Last update: 6 seconds ago



Texas Parks & Wildlife | CONANP | Esri | TomTom | Garmin | SafeGraph | CGIAR | USGS | FAO | METVNASA | Sources: Esri, USGS | EPA | NPS | USFWS | NOAA, Esri | Source: USGS, NOAA and the GIS Community

Powered by Esri

Federal Stream Gauges

- Owl Ck at E Range Rd, Ft Hood, TX - 5.99 ft.
- Nolan Ck at S Penelope, Belton, TX - 10.91 ft.
- Henson Ck at W Range Rd nr Gatesville, TX - 7.28 ft.
- Leon Rv at Gatesville, TX - 2.77 ft.
- Leon Rv nr Hamilton, TX - 3.73 ft.
- Leon Rv nr Hasse, TX - 3.26 ft.
- Leon River at Belton - 3.74 ft.
- Copperas Ck at FM 2247 nr Comanche, TX - 2.57 ft.
- Leon Rv nr De Leon, TX - 1.31 ft.
- Leon River at Hamilton - 3.73 ft.
- Leon River at Gatesville - 2.77 ft.
- Cowhouse Creek at Pidcoke - 2.17 ft.
- Cowhouse Ck at Pidcoke, TX - 2.19 ft.
- Cowhouse Ck at Old Georgetown Rd nr Ft Hood, TX - 5.33 ft.
- Cowhouse Ck at W Range Rd nr Ft Hood, TX - 6.22 ft.
- House Ck at Old Georgetown Rd nr Ft Hood, TX - 6.99 ft.
- Clear Ck at Ft Hood, TX - 3.76 ft.
- House Ck at W Range Rd nr Ft Hood, TX - 4.74 ft.
- Cowhouse Ck at FM 1783 nr Purmela, TX - 816.60 ft.

Last update: 5 seconds ago

Watches & Warnings

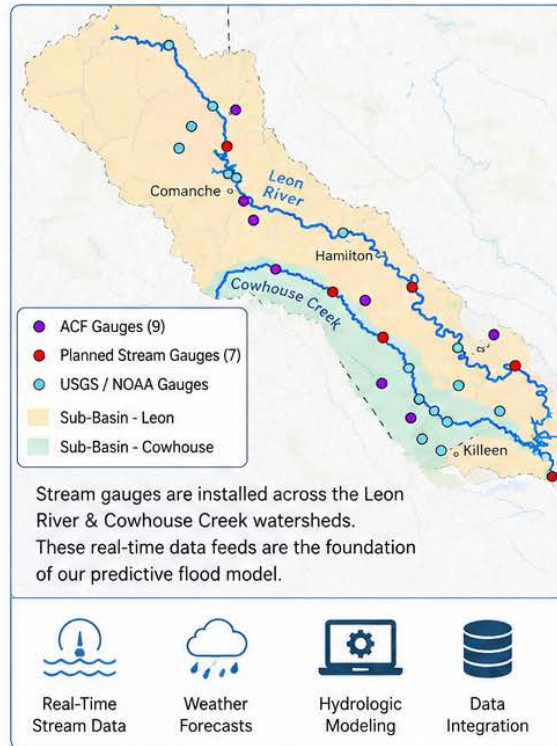
No data

Last update: 6 seconds ago

Data Delivery - Upcoming

WHERE WE ARE

Building the Foundation



WHERE WE'RE GOING

Delivering Real-Time Flood Intelligence



REAL-TIME ALERTS

Receive flood warnings based on live conditions and model predictions.



FLOOD INUNDATION MAPS

See which areas will be flooded based on predicted rainfall amounts.



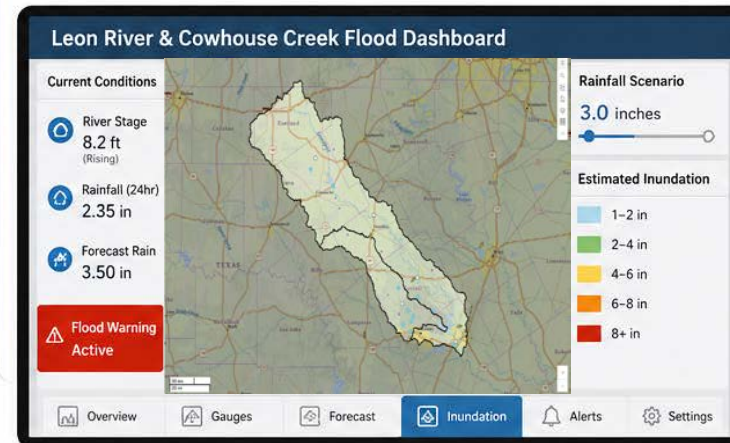
RAINFALL SCENARIOS

Explore how different inches of rainfall impact flooding across the basin.



INTERACTIVE DASHBOARD

All tools and maps available in one easy-to-use ArcGIS Online dashboard.



The Goal

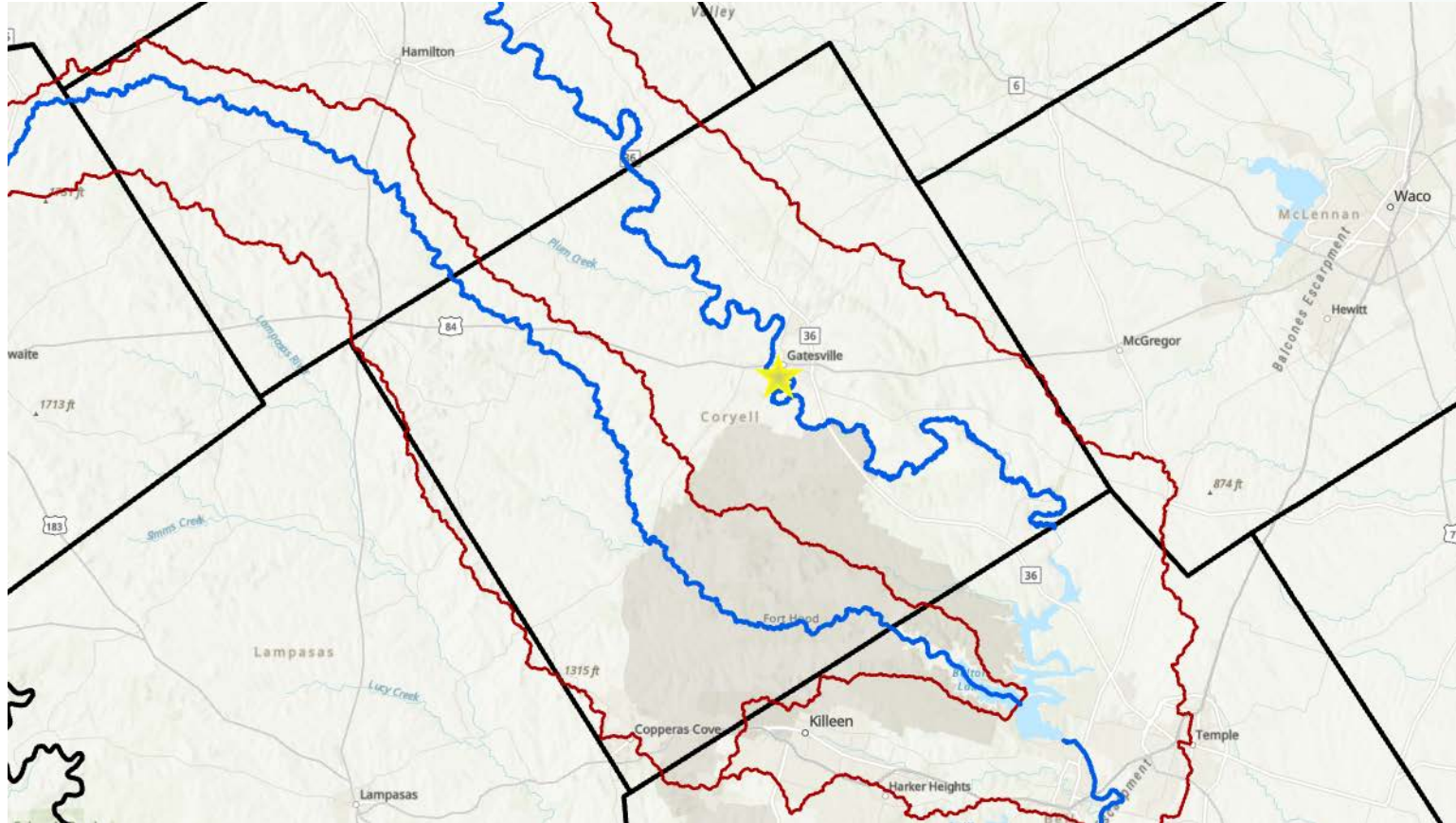


Empower decision-makers and the public with timely, actionable flood information to save lives and reduce risk.

From real-time data to real-time decisions.

Smarter forecasting. Stronger communities. Safer tomorrows.

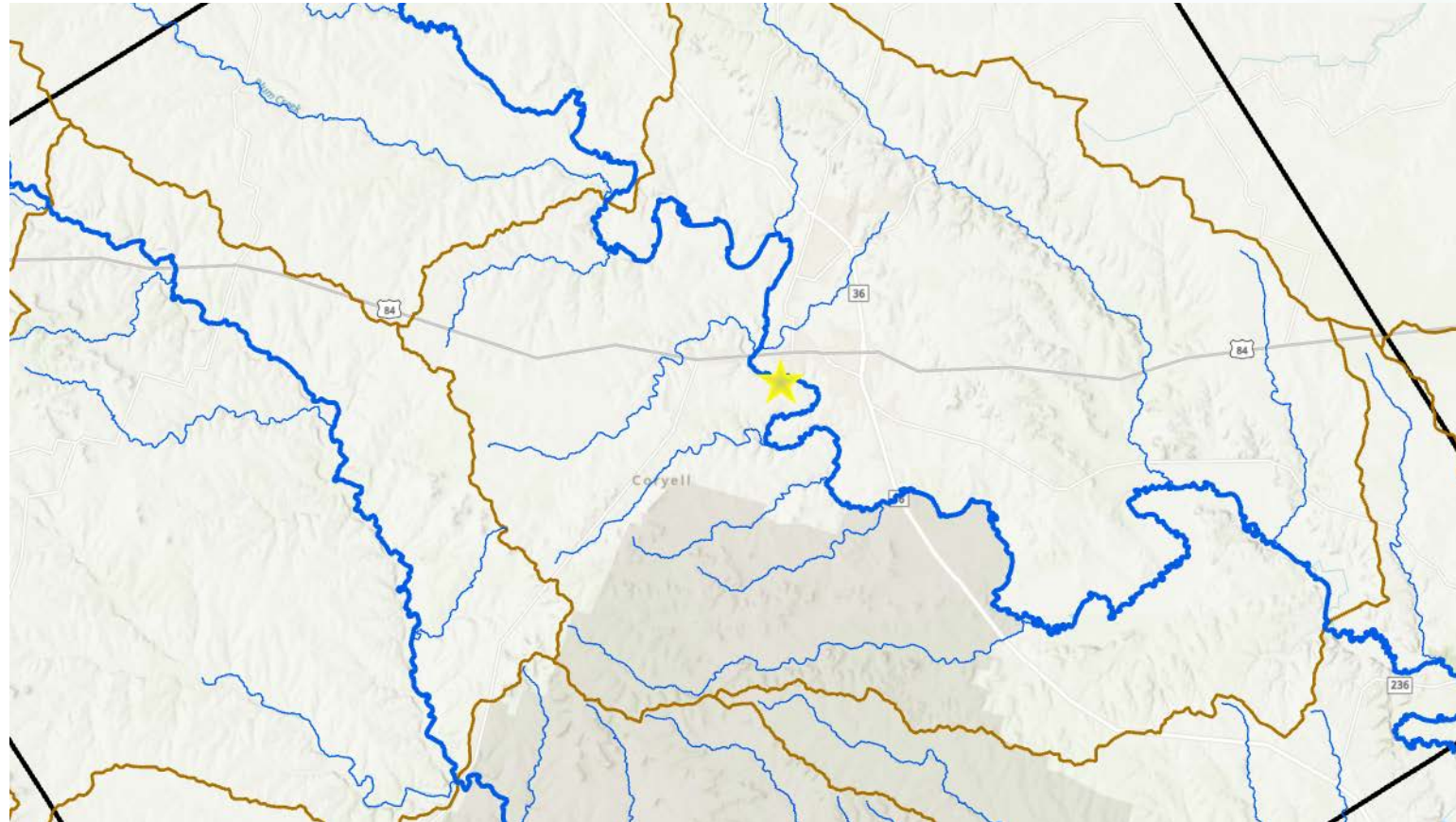
Faunt LeRoy Park – HUC 8



Faunt LeRoy Park

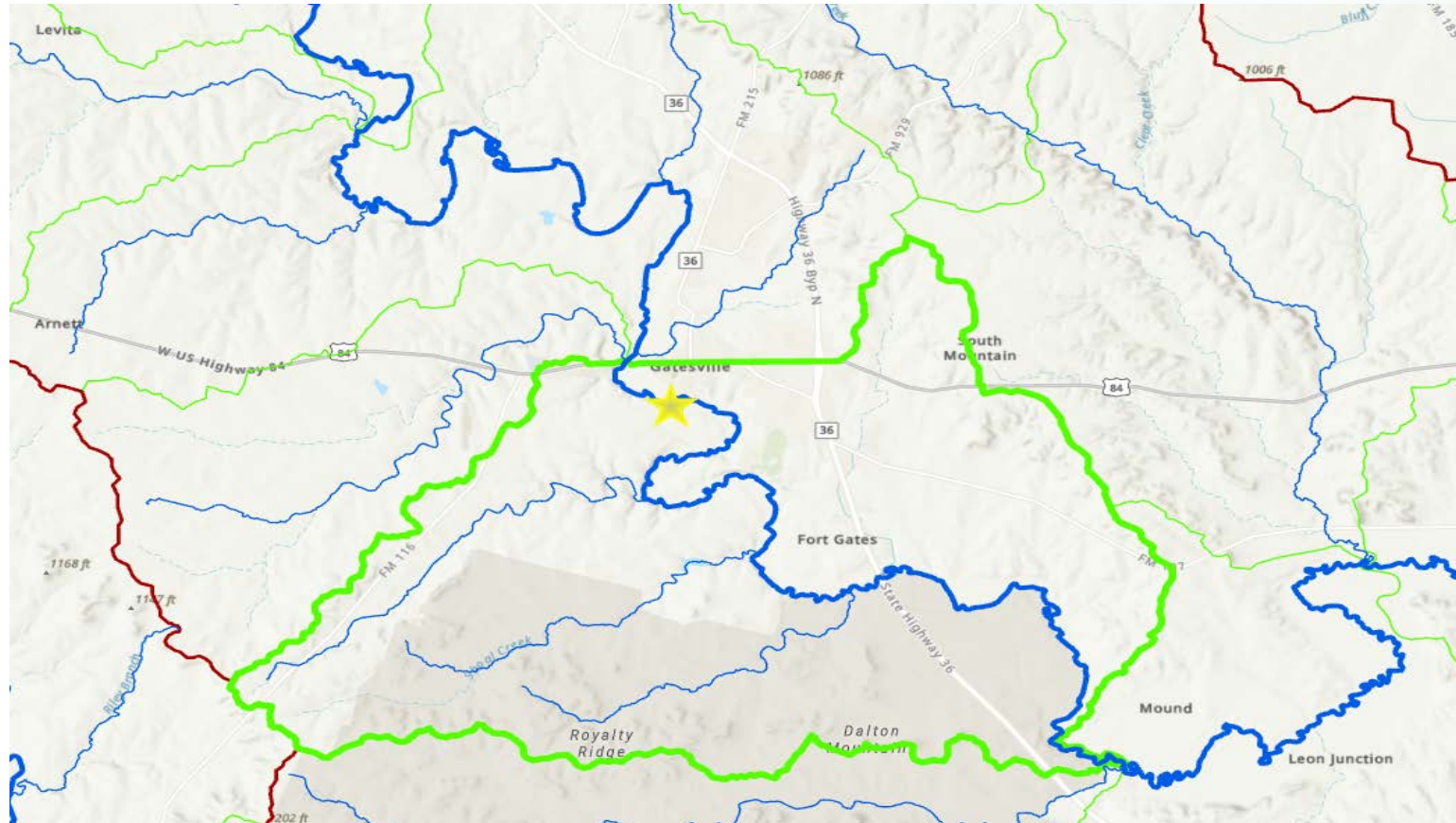
HUC	Name	Acres	Miles of Streams
HUC 8	Leon	1,932,087	7,133

Faunt LeRoy Park – HUC 10



Faunt LeRoy Park			
HUC	Name	Acres	Miles of Streams
HUC 8	Leon	1,932,087	7,133
HUC 10	Coryell Creek - Leon River	202,104	784

Faunt LeRoy Park – HUC 12



Faunt LeRoy Park			
HUC	Name	Acres	Miles of Streams
HUC 8	Leon	1,932,087	7,133
HUC 10	Coryell Creek - Leon River	202,104	784
HUC 12	Cottonwood Creek - Leon River	41,112	167

HUC 14

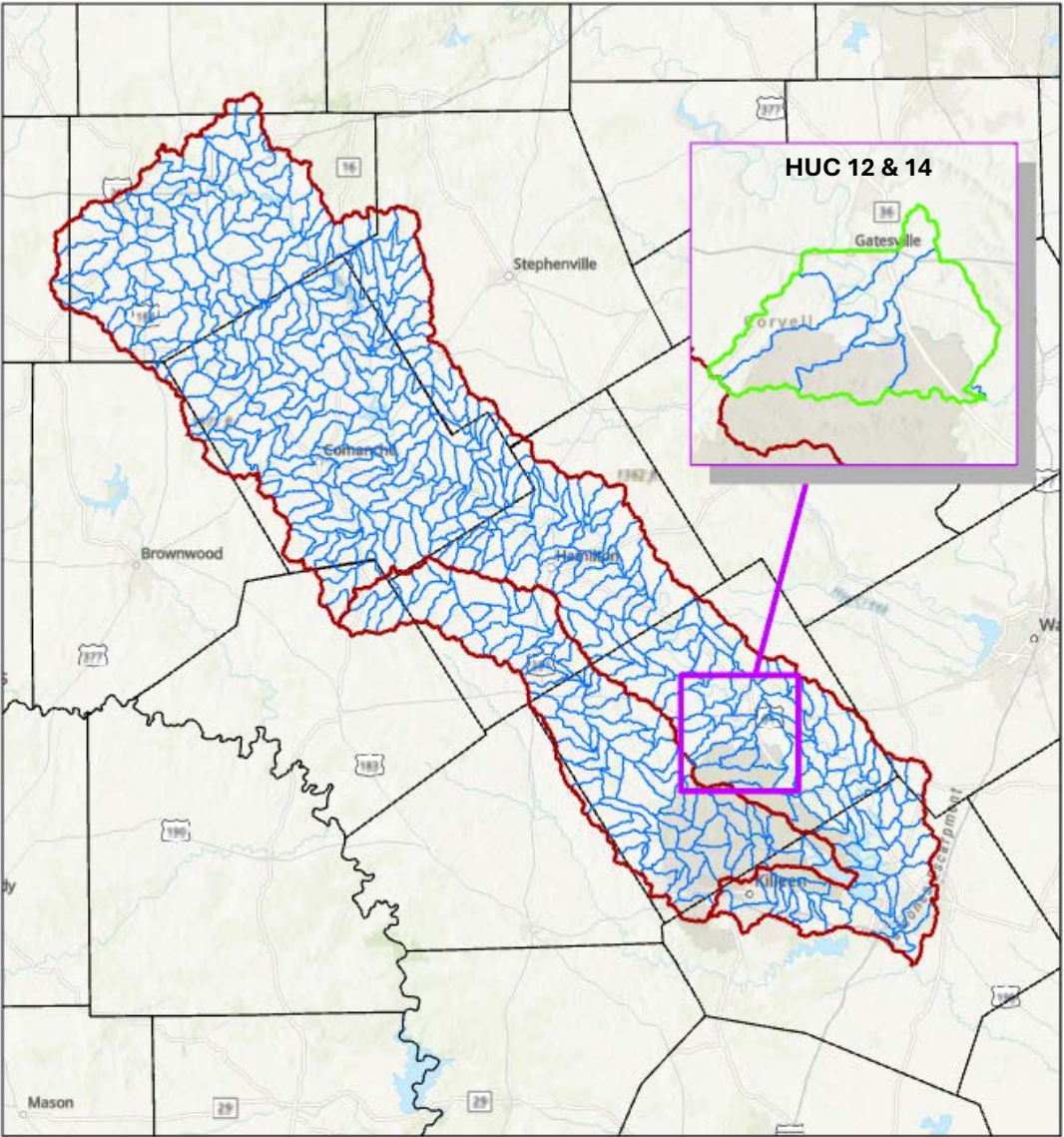
HUC 8, HUC 12,
and HUC 14
in Project Area



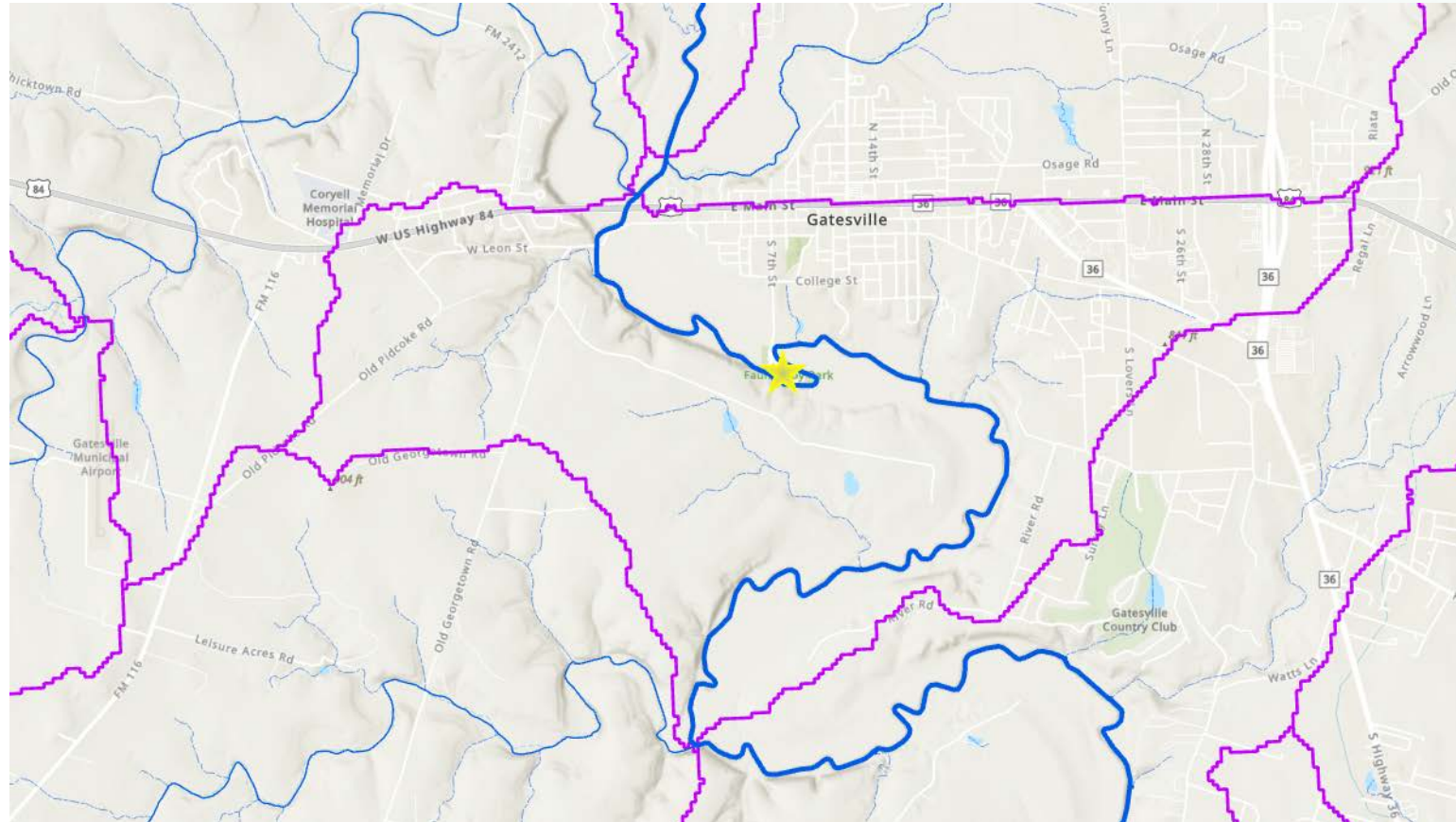
Legend

- HUC 8 (2)
- HUC 12 (95)
- HUC 14 (448)
- Texas_Counties

Overview Map

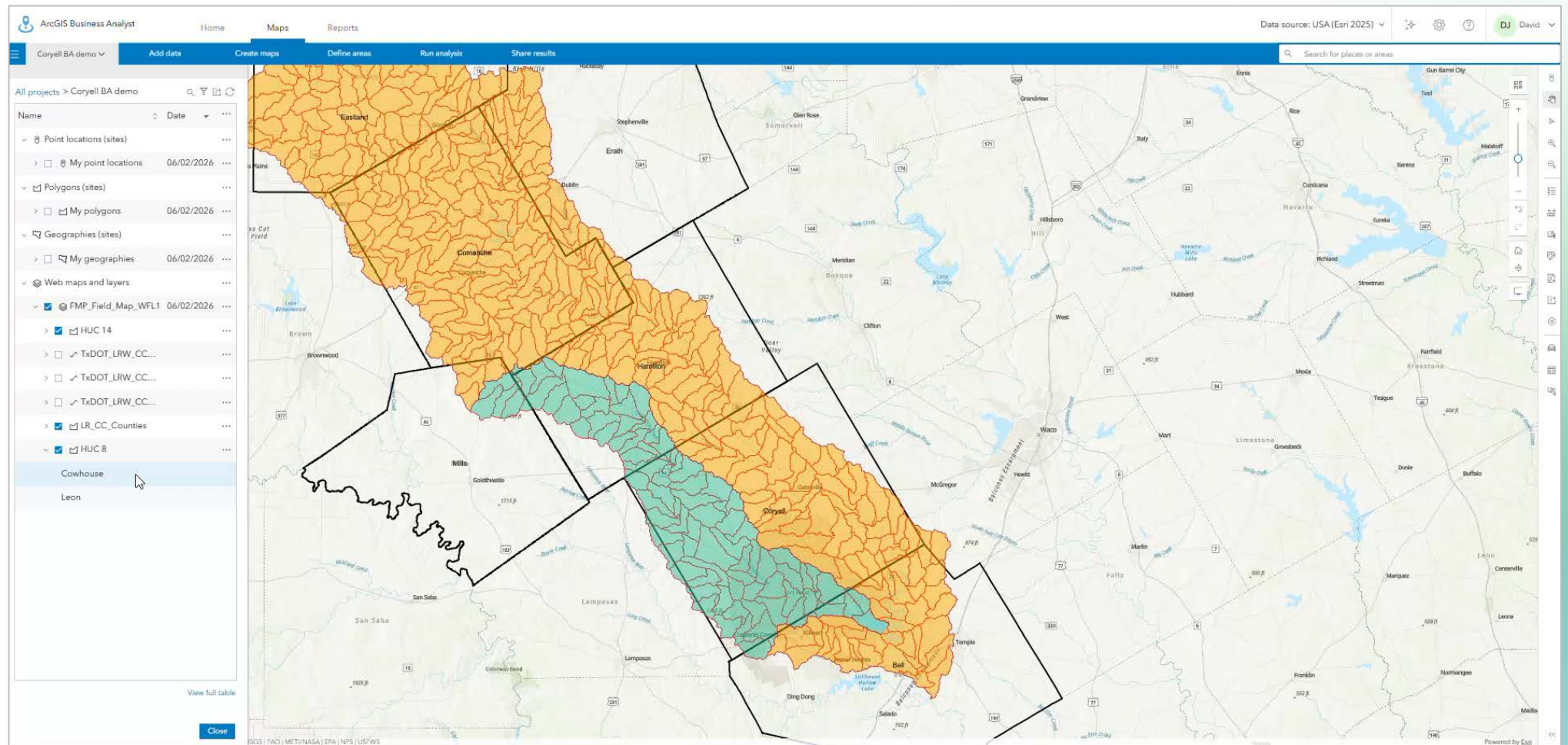


Faunt LeRoy Park – HUC 14



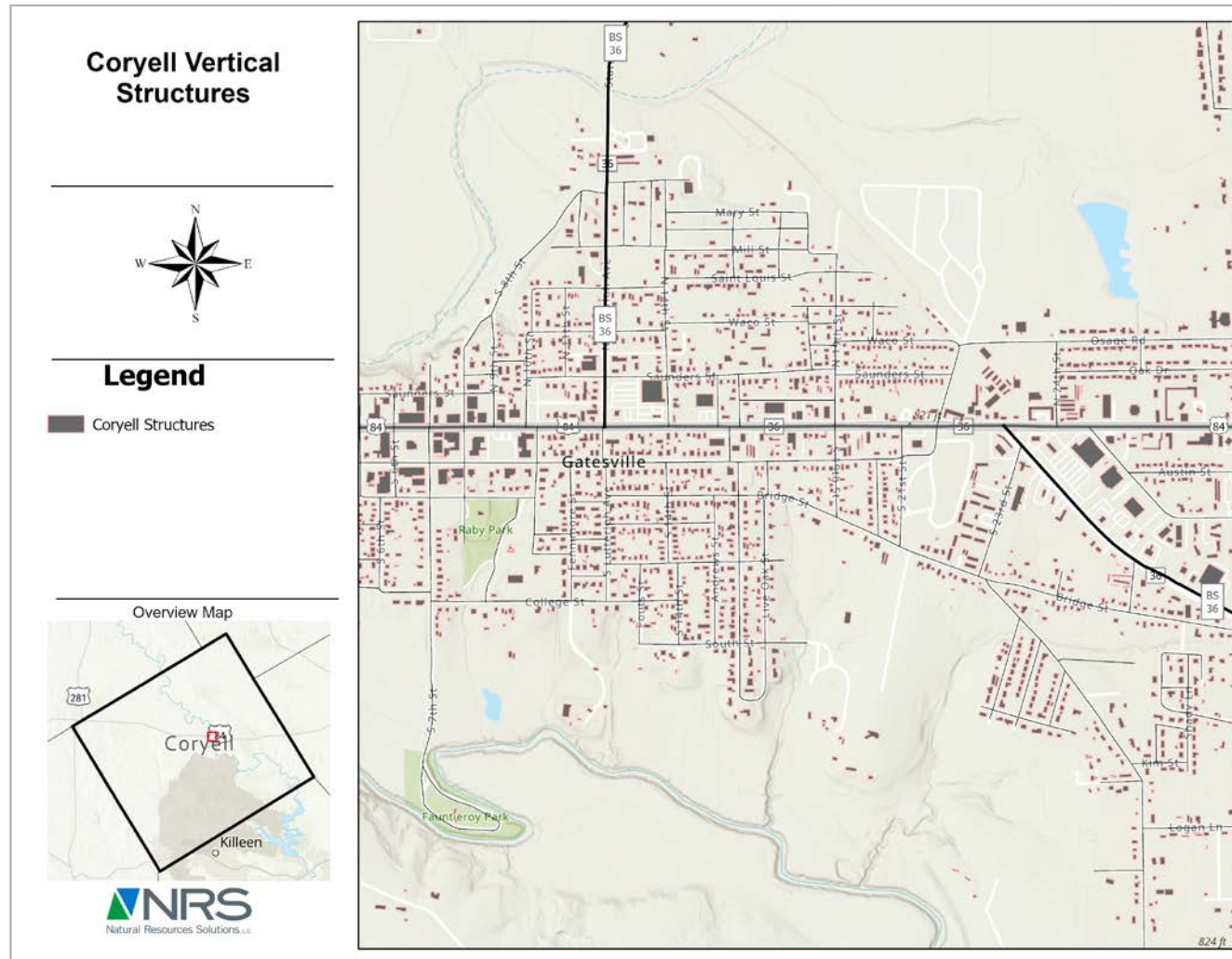
Faunt LeRoy Park			
HUC	Name	Acres	Miles of Streams
HUC 8	Leon	1,932,087	7,133
HUC 10	Coryell Creek - Leon River	202,104	784
HUC 12	Cottonwood Creek - Leon River	41,112	167
HUC 14	12070201090504	2,401	16

HUC 14 Analysis



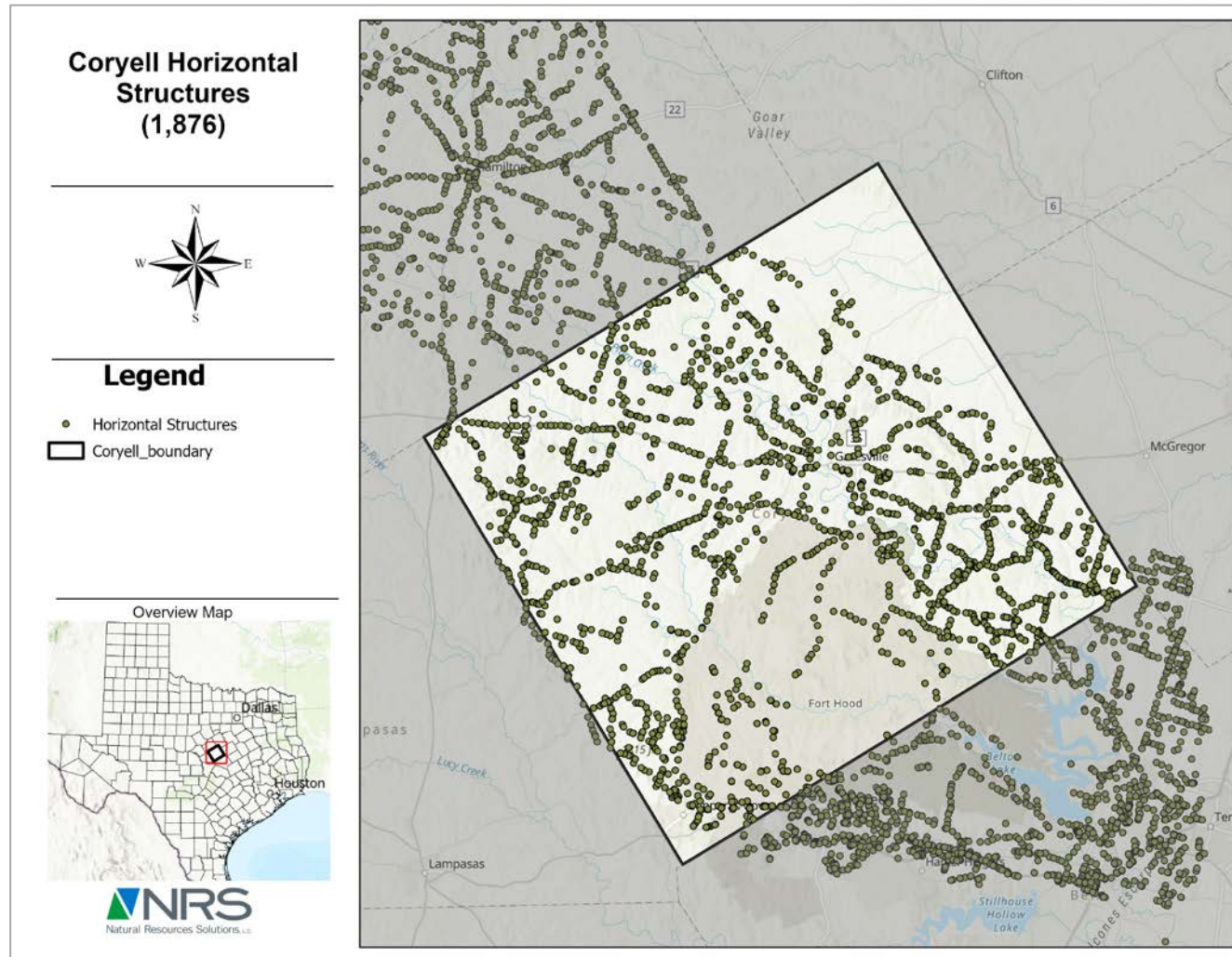
Identifying Risks

30,944 V-
Structures in
Coryell County



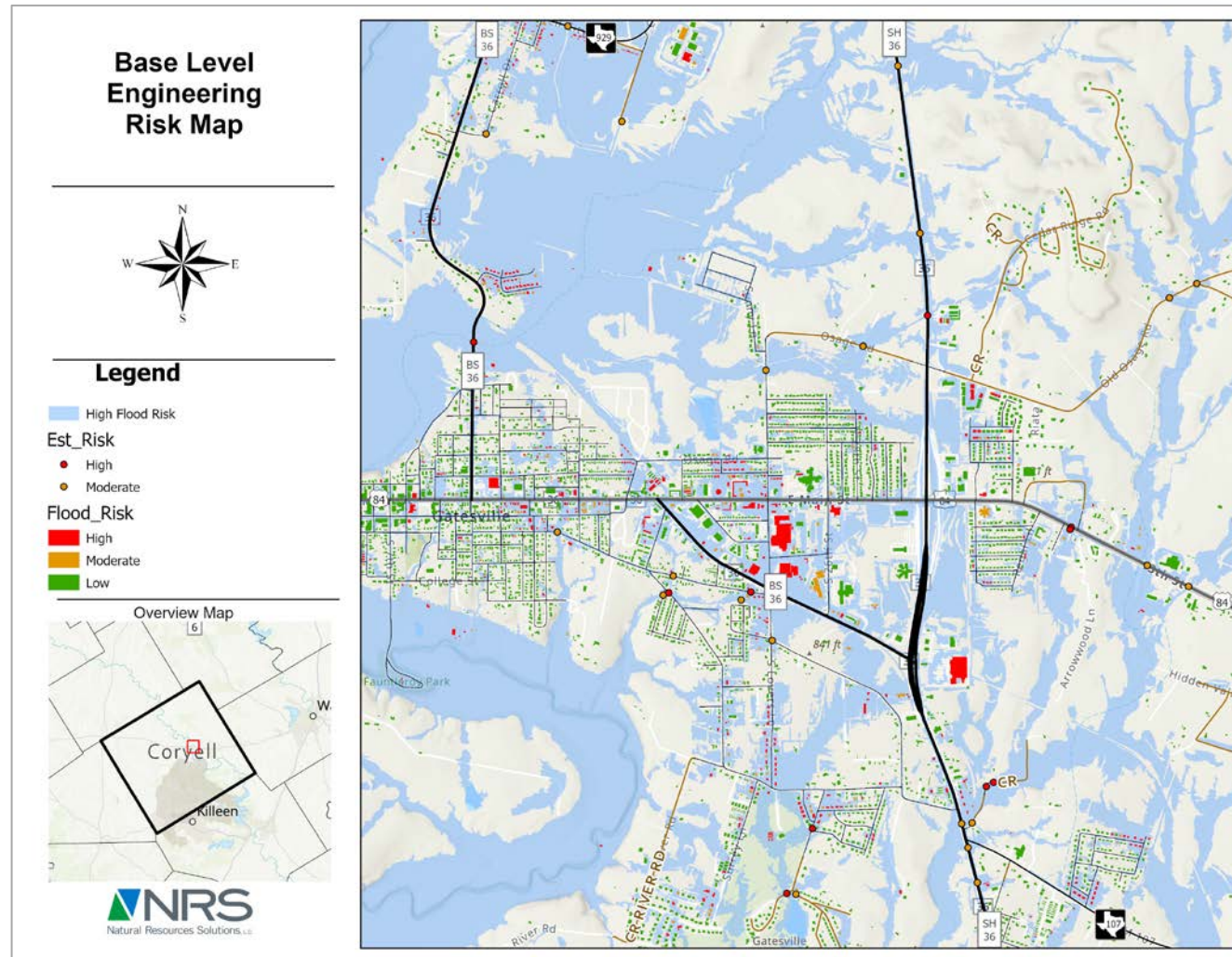
Identifying Risks

1,876 H- Structures
in Coryell County



Identifying Risks

Base Level Engineering Risk Map with horizontal and vertical Structures.



THANK YOU

QUESTIONS?